

Quick Guide

Secondary Glazing Company

secondaryglazingcompany.com



SECONDARY GLAZING
COMPANY

Timber Sub-frame (Recommended)

This is pre-bonded to the aluminium main frame and included in the build sizes.

Enables adjustability onsite to fit and notch around lumps, bumps, and cables.

This is the surface the perimeter trim is attached to seal off & hide gaps around the frame

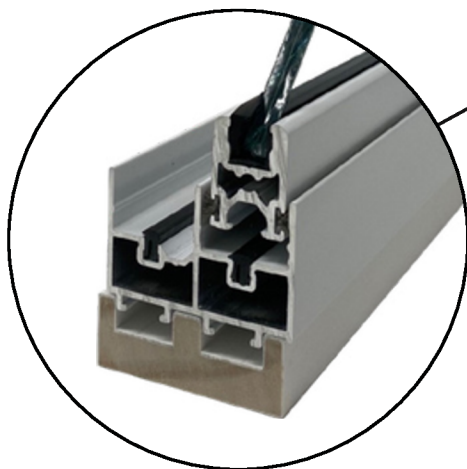


Standard Sub-Frame
Example 43mm x 16mm

Refer to the product guides
for specific details

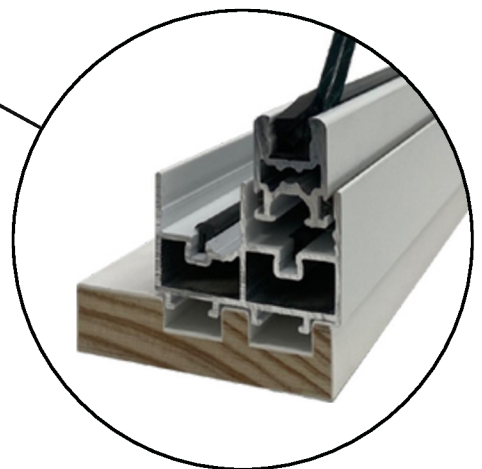


XL Sub-Frame: (Extra Long)
Example 62mm x 16mm



The Standard Glazing
Panel will accomodate upto
a 6.8mm glass

The Ultra Glazing Panel
will default apply if an 8.8mm
or 10.8mm glass is selected

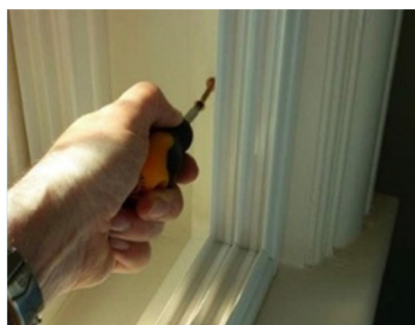


Frame Fixing Options



Face Fixed

In the Reveal fixed to the
Primary window Frame



Reveal Fixed

Fixed to the side Walls, Sill & Top
inside the reveal (example XL Frame)

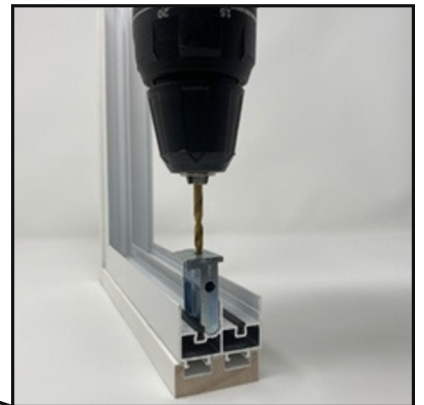


Surface Fixed

Face Fixed around the window
reveal to the internal wall

Reveal Fix - Track Drilled

Side, Top & Bottom Fixing through the aluminium track.
Drilled by the customer / installer onsite using
a tool supplied with the unit.

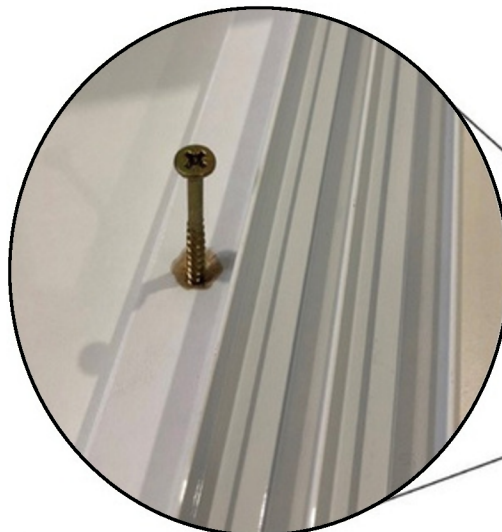


Face Fix

Front to Back Fixing
Factory pre-drilled

Reveal Fix XL Frame Drilled

Side, Top & Bottom Fixing
through the timber sub-frame
Factory pre-drilled



Trimming

Perimeter sealing & finishing, hiding gaps and inaccuracies between the wall and frame. 20mm x 6mm Trim supplied as standard for the front face of the units.

Alternative sizes available as an optional extra.



Awkward Areas



Trimmed & Finished



Accommodating Cables



Front & Side Trimming